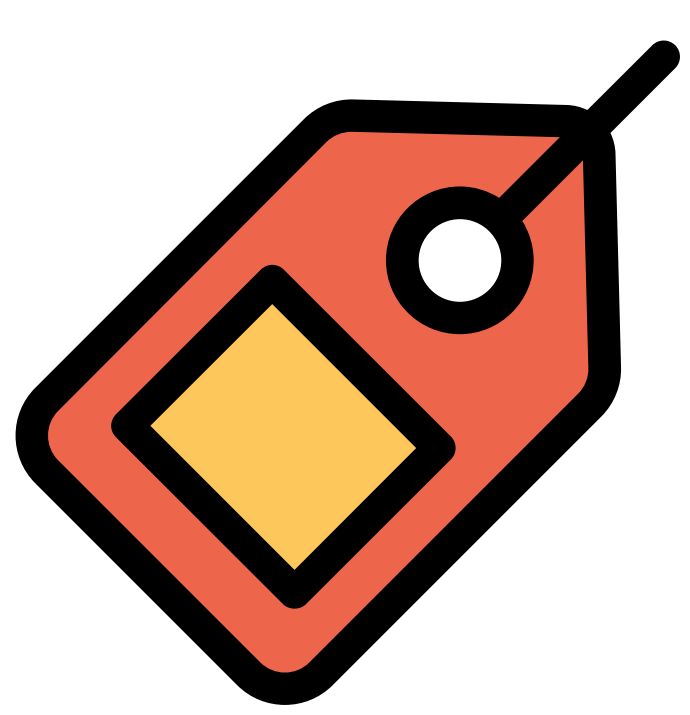
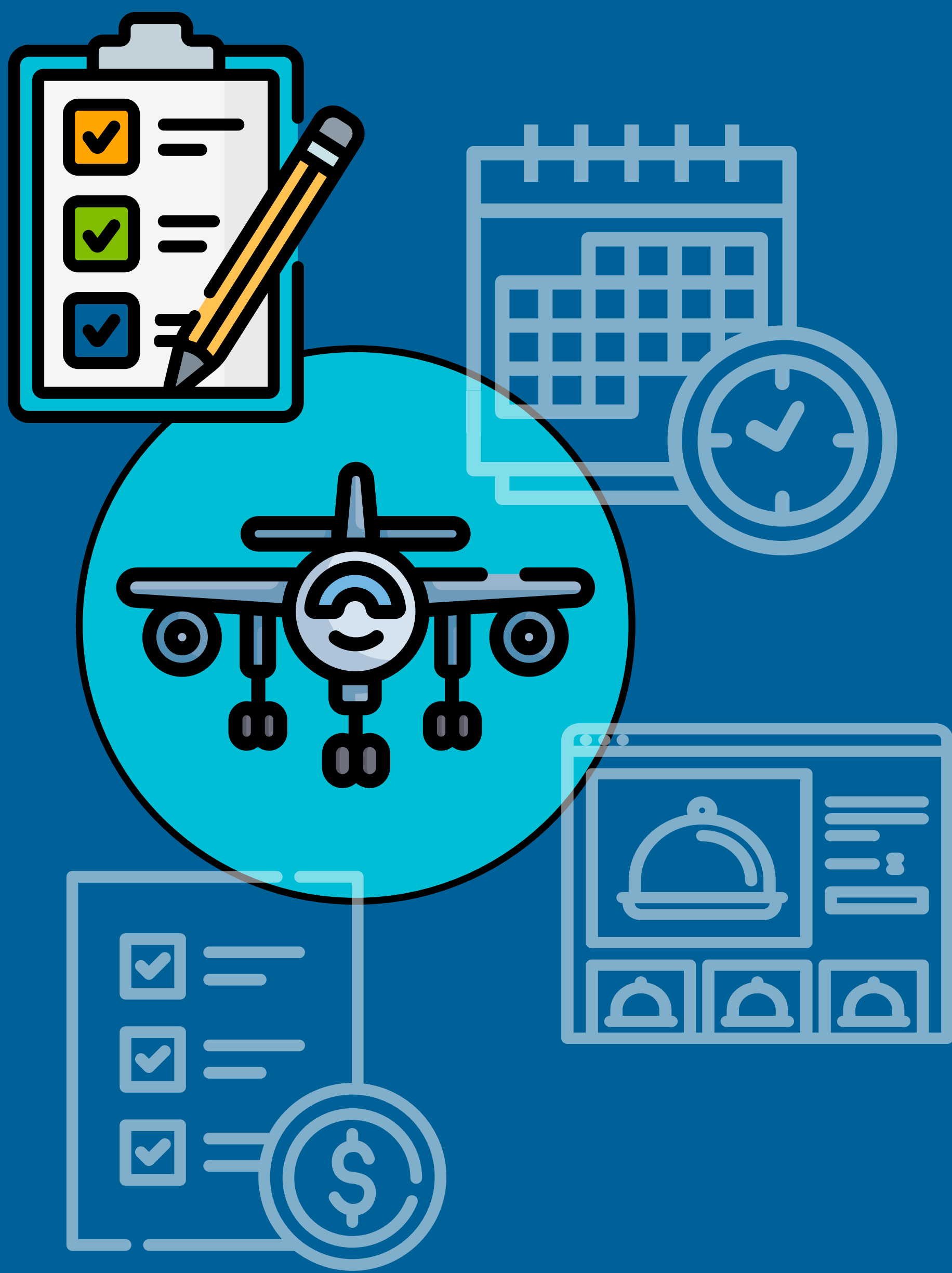


Specifications Tips & Tricks for Paxia IFX

Our Paxia Experts share some of their favorite tips and hidden gems

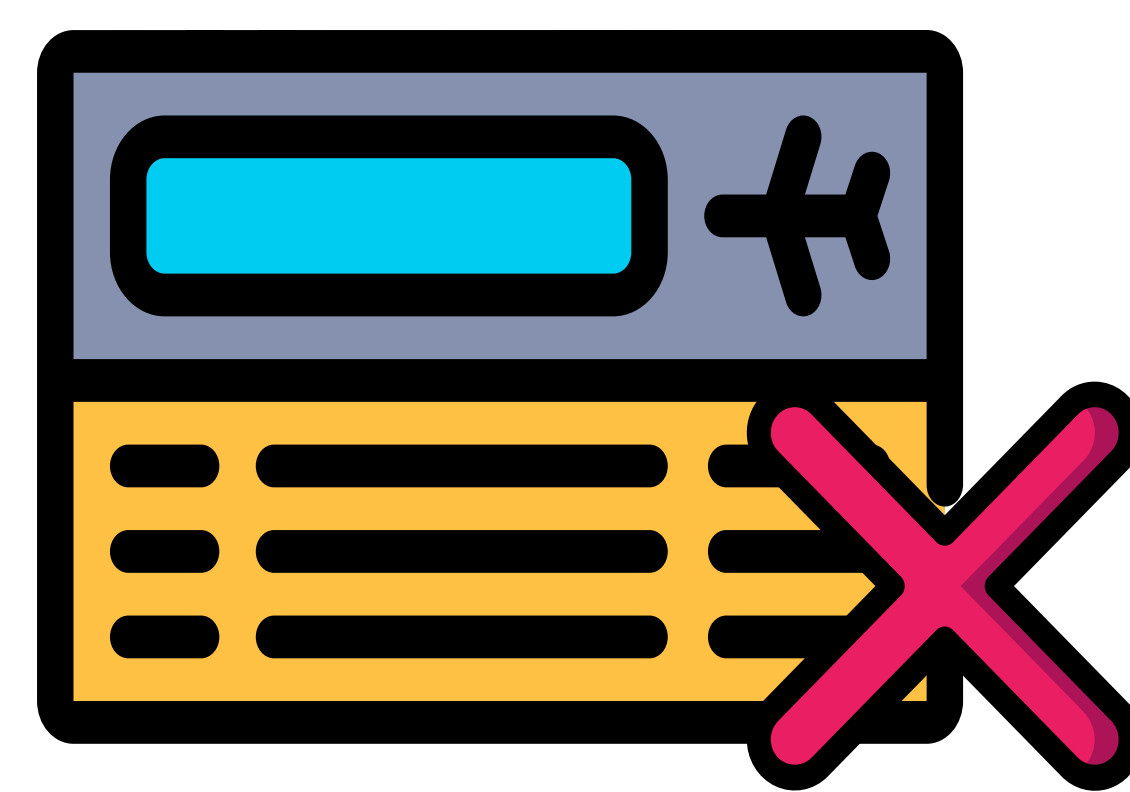


Tip **1**

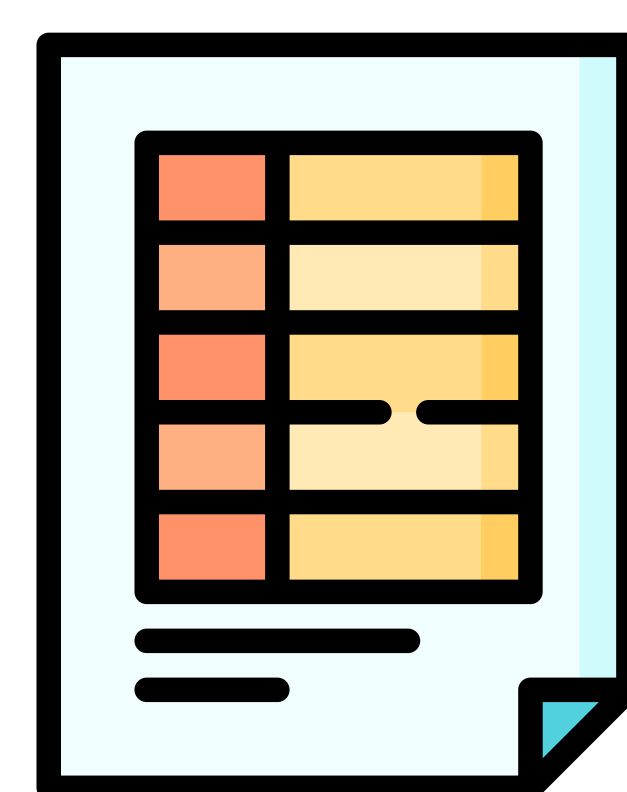
Use Spec Tags when creating new specifications for a specific or limited purpose.

Deactivate and hide specifications from view by marking them 'inactive.'

Tip **2**



Tip **3**



Limit the sections of a specification that are shown and used based on the type of specification.

Tip **4**



View what has changed between two versions of the same specification.

Tip **5**



Limit the number of scheduling rules required for scheduling a specification that only varies based on aircraft type.

For Detailed Instructions:

Please contact your Paxia Account Executive for our exclusive eBook, "Top 5 Tips and Tricks for Paxia IFX: Specifications Module."